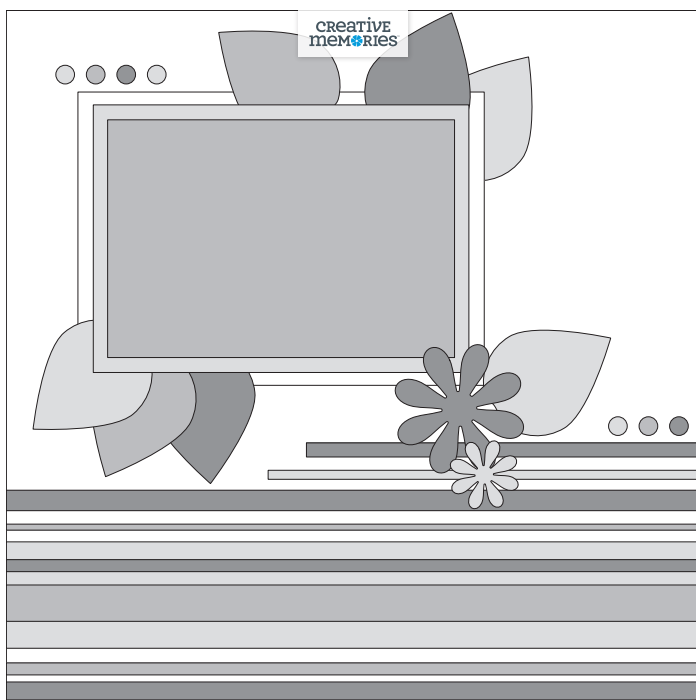
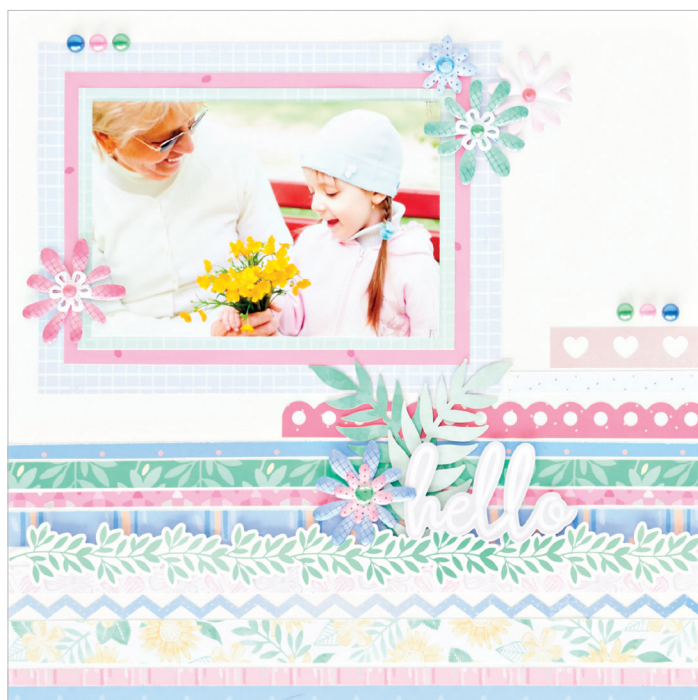


12-inch Rotary Trimmer = Sketch Booklet! =

Your 12-inch Rotary Trimmer cuts through your cardstock and designer papers like butter. In this booklet you'll learn new trimming skills featuring the interchangeable safety blades, extendable Ruler Arm and Sight Line™, plus you'll get sketch ideas to get you up and running using your new Rotary Trimmer!



Example Sketch



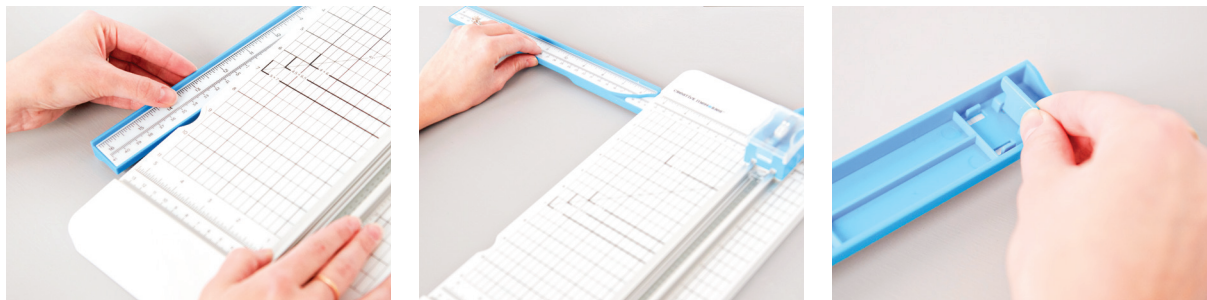
Example Finished Layout
Collection Pictured: Blend & Bloom

NOT SURE HOW TO READ A SKETCH?

Not to worry - check out the instructions on the next page!

ROTARY TRIMMER BASICS

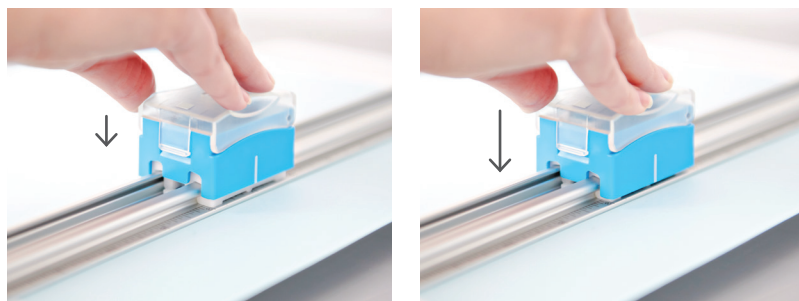
Extending the Ruler Arm: The Rotary Trimmer features an extendable and self-leveling Ruler Arm that sits flush with the base and measures up to 16 inches (41 cm). Pull the self-leveling Ruler Arm out from the side of the base. It will snap into place once fully extended. Use the footrest underneath the Ruler Arm for extra stability.



Preparing to Cut: Lift the Double-Track Blade Guide and place paper at the desired measurement. Visible Grid Lines printed in high-contrast black on the base allow for easy and accurate cuts in English and Metric measurements. Once you have positioned your paper, close the Blade Guide. Check your alignment by using the Sight Line™ to ensure a straight cut even if the paper is not against an edge or a cut is needed in the middle of a page. The Sight Line™ is a small clear window on either side of the blade housing that indicates exactly where the blade will cut. Its black alignment marker lines up with the dashed cut line on the cutting mat surface.

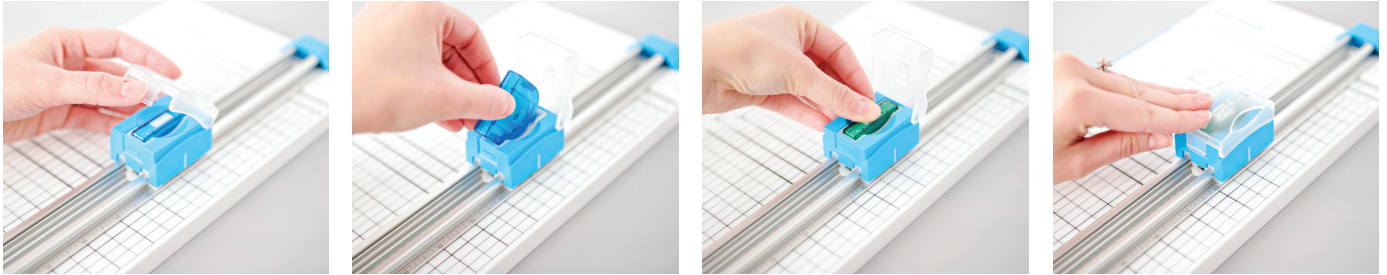


Making a Cut: Apply downward pressure on the blade housing to engage the blade. Slide the blade housing down the guide in one smooth action to complete the cut. The Double-Track Blade Guide design provides you with ultimate stability and control, resulting in a straight cut every time. Lift the guide to remove paper and scraps when cut is complete.



TRIMMER BLADES

How to Change a Blade: Open the blade housing lid by lifting the latch on the side. Remove the blade cassette and replace with a different blade cassette (rounded side down). Close the lid.



Blade Cassettes & Storage: While you receive a Straight Blade Cassette with your trimmer, there are additional blades available, including the blades pictured below. Additionally, store up to 12 blades and an additional cutting mat strip in the built-in storage on the underside of the trimmer.



Straight Blade



Scoring Blade



Wave Blade



Storage

WHAT ARE SCRAPBOOK SKETCHES?

Think of sketches as “blueprints” for creating pages. They feature outlines for scrapbook layouts that give ideas for where to place papers, photos, embellishments, titles and journal.

Below are examples of what each shape on a sketch layout could represent but remember – it’s up to YOU!

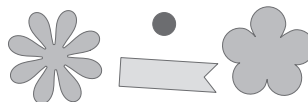
Dark rectangle or square boxes: Photos



Rectangle or square boxes: Papers or mats



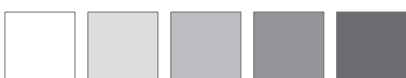
Other shapes: Embellishments or stickers



Title: Large writing, die-cut, title sticker or ABC Stickers

TITLE

Corresponding shades: Can suggest using the same designer paper, cardstock or mats



Long rectangles or circles: Die-cut border embellishments, border stickers, Border Maker Cartridge or border punch borders



Journal or lines: Place to write and journal

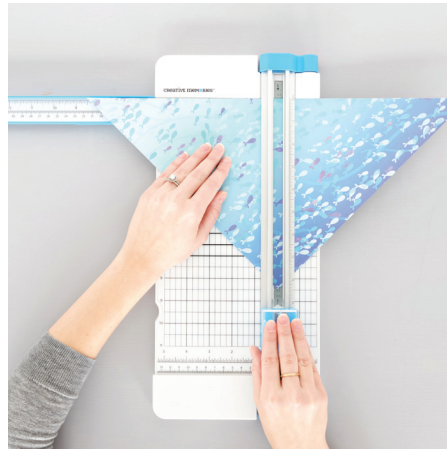
JOURNAL _____
JOURNAL _____

Diagonal Cuts



Step 1

Fold paper in half diagonally.



Step 2

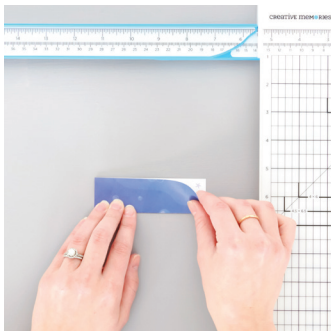
Place paper into trimmer with folded edge at the top and the point positioned on the dashed alignment guide on the cutting mat strip. Trim the paper.



Step 3

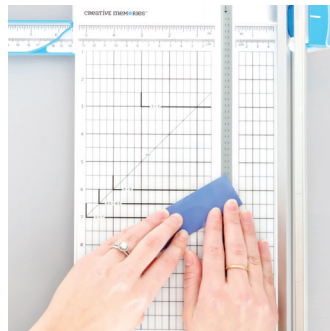
Remove from trimmer and unfold paper.

Flags



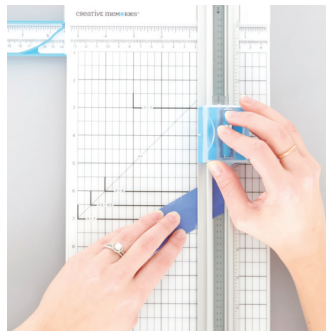
Step 1

Lightly fold a rectangle of paper longways.



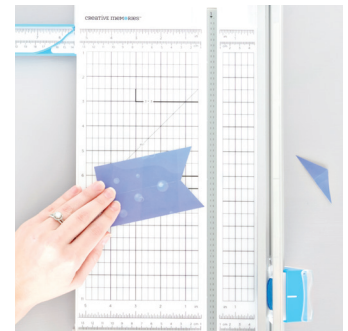
Step 2

Position your folded rectangle in the trimmer on an angle. Align the unfolded corner (facing away from you) with the guideline on the cutting mat strip and place the folded corner (facing you) to the right of the cutting mat strip.



Step 3

Trim the paper.

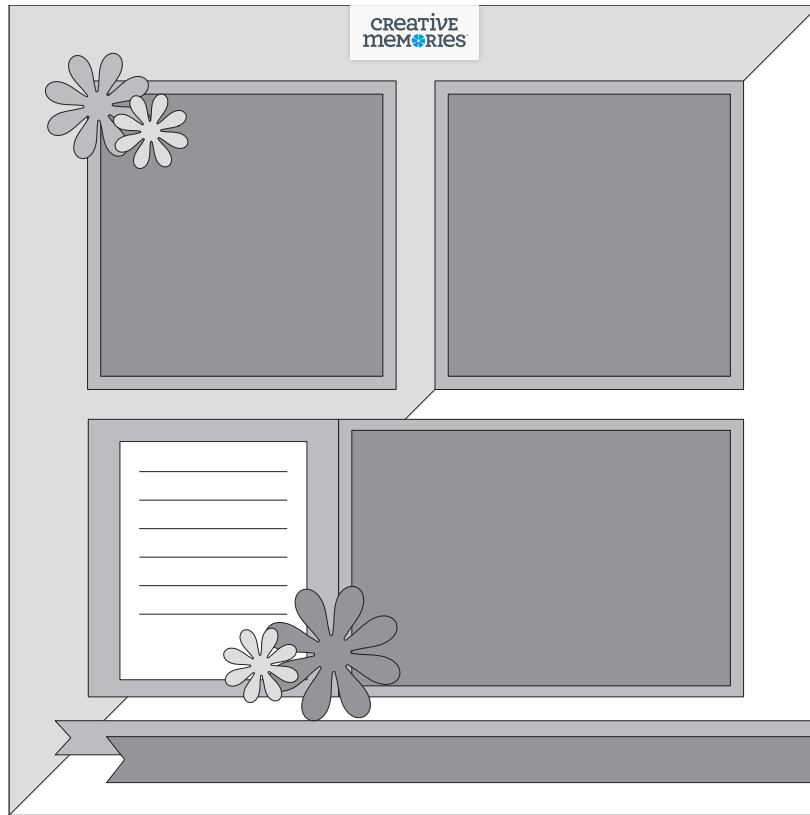


Step 3

Unfold the paper.

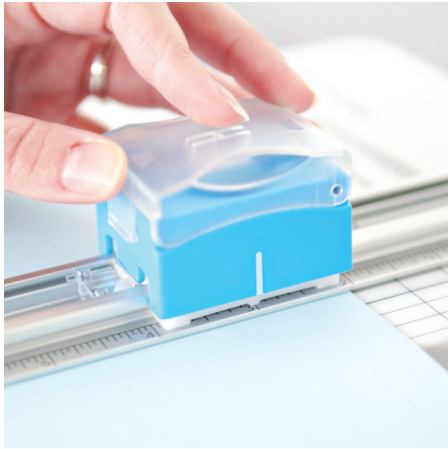
SKETCH #1

Layout



Collection Pictured: Mermaid Cove

Making Interior Page Cuts



Step 1

Align the white dash on the side of the blade housing at the location you want to start your cut.



Step 2

Push down on the blade housing to begin the cut, and pull until the white alignment marker reaches your desired end point.



Step 3

Lift up to remove pressure on the blade housing and end your cut.

Special Instructions for Sketch #2



Step 1

Using the Straight Blade, cut a piece of 12x12" cardstock at 12" wide x 6" high.



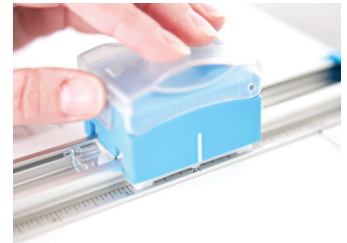
Step 2

Switch to the Scoring Blade and hold the paper with the 12" side horizontal. Score the cardstock at 2", 4", 8" and 10".



Step 3

Switch back to the Straight Blade and rotate the paper so that the 12" side is vertical.



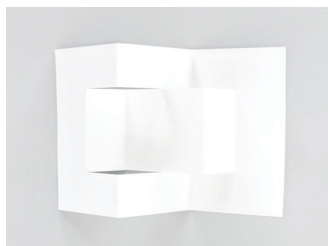
Step 4

Position your blade at the 1.5" horizontal measurement and trim from 2" vertically to 10" vertically (making an 8" cut).



Step 5

Flip the paper and make the same cut on the other side. Position your cardstock at 1.5" horizontally and cut vertically from 2" to 10".



Step 6

Fold the card following Sketch #2 (above right). It should be able to lay flat in an envelope.



Step 7

Re-open the card to measure each piece with a ruler to determine how to trim your designer paper for decoration.

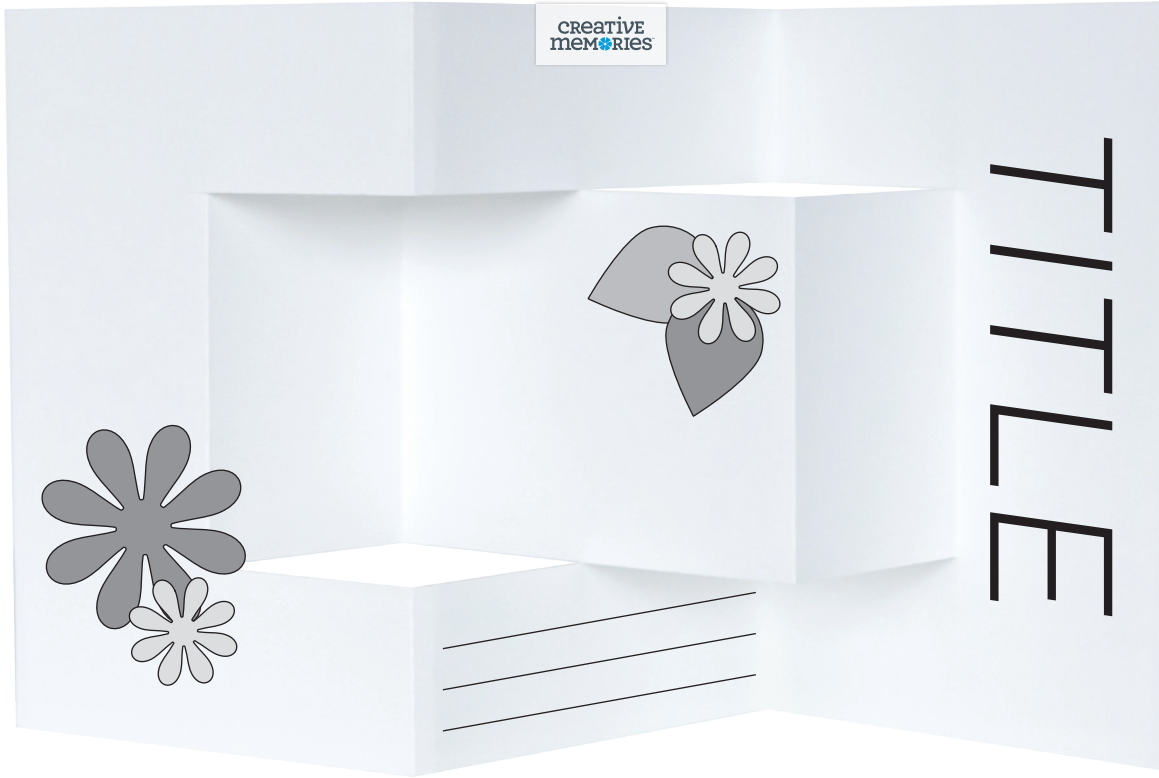


Step 8

Adhere the trimmed pieces to the blank card base. After decorating, fold the card flat and insert into an A6 (or larger) envelope for sending.

SKETCH #2

Card



Collection Pictured: Happy BirthYAY

TIPS & TRICKS

Cutting Triangles



Step 1

Trim paper to 3.5" x 4", draw a small pencil mark halfway along the top of the rectangle.



Step 2

Position the pencil mark and the corner of the rectangle on the dashed alignment guide on the cutting mat strip as shown, close the Blade Guide and trim.

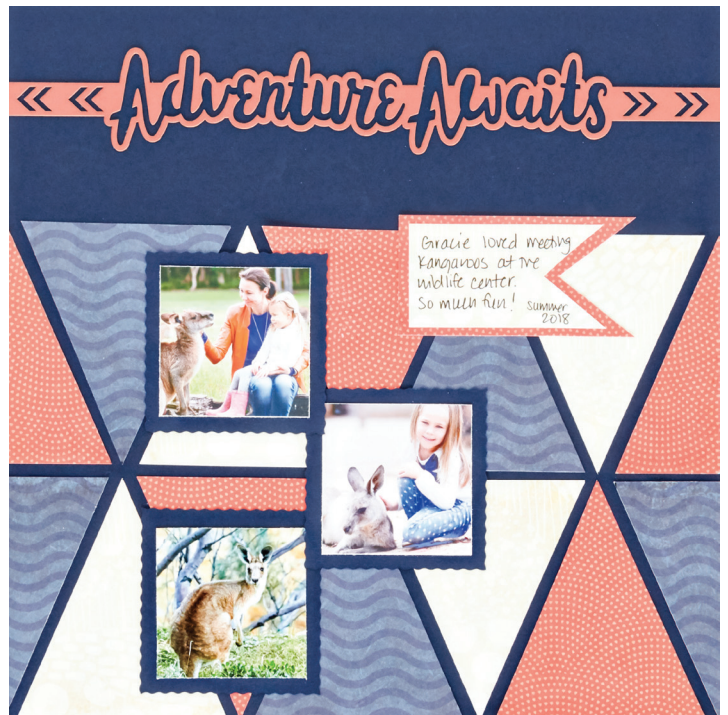
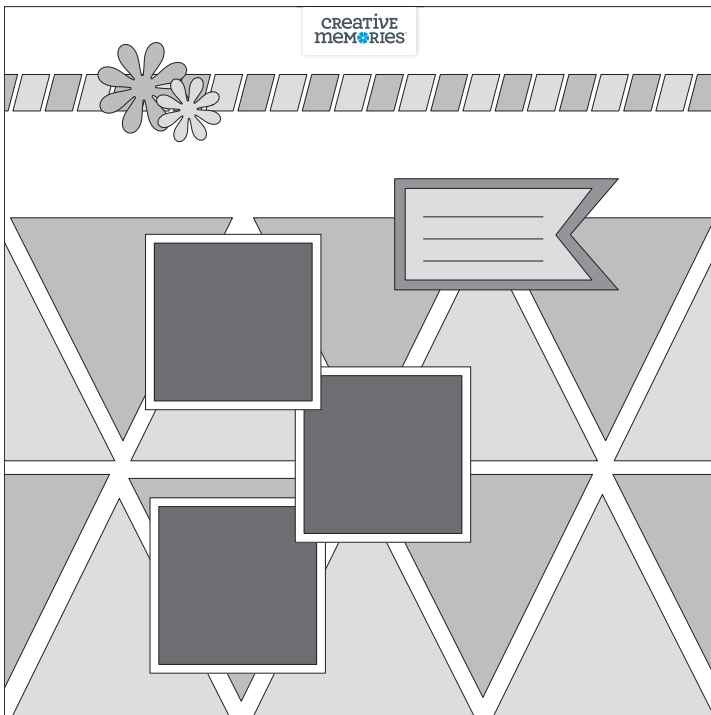


Step 3

Flip the paper over and repeat the process.

SKETCH #3

Layout



Create decorative edges with the Scallop Blade!

Collection Pictured: Walkabout